

[54] **METHOD OF MAKING ANISOTROPIC PERMANENT MAGNETS OF MN-AL-C ALLOYS**

[75] Inventors: Yoichi Sakamoto, Hirakata; Nobuyuki Kato; Tadao Ohtani, both of Katano, all of Japan

[73] Assignee: Matsushita Electric Industrial Co., Ltd., Japan

[21] Appl. No.: 592,314

[22] Filed: July 1, 1975

[30] **Foreign Application Priority Data**

July 11, 1974 Japan 49-79789

[51] Int. Cl.² B21C 23/00; H01F 1/00; H01F 7/02

[52] U.S. Cl. 72/253 R; 29/608; 148/120; 72/467; 72/700; 72/DIG. 31

[58] Field of Search 29/608; 72/467, 253, 72/700, DIG. 31; 148/120; 75/134 M

[56]

References Cited

U.S. PATENT DOCUMENTS

2,971,644	2/1961	Sejournet	72/253
3,118,795	1/1964	Kolbe	148/120 X
3,661,567	5/1972	Yamamoto	75/134 M
3,730,784	5/1973	Yamamoto	75/134 M
3,771,221	11/1973	Bachmann et al.	29/608
3,886,775	6/1975	Korsell et al.	72/467 X
3,944,445	3/1976	Ohtani et al.	148/120 X
3,976,519	8/1976	Kubo	148/120

Primary Examiner—C.W. Lanham

Assistant Examiner—D. M. Gurley

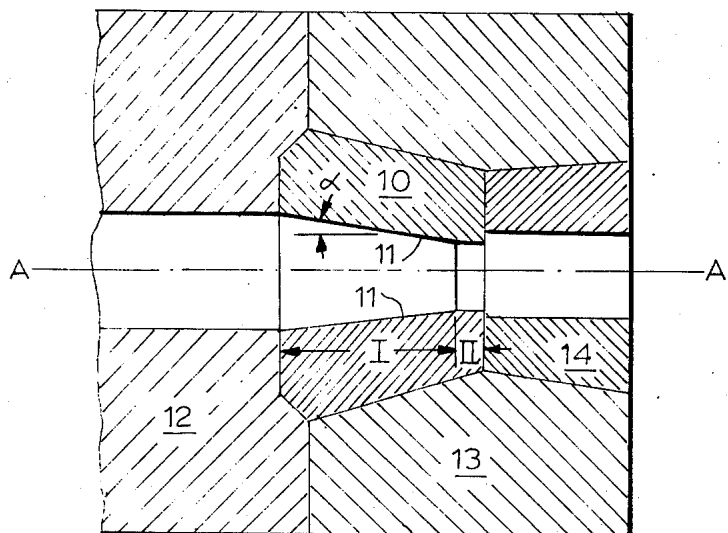
Attorney, Agent, or Firm—Wenderoth, Lind & Ponack

[57]

ABSTRACT

Anisotropic permanent magnets of Mn-Al-C polycrystalline alloy are produced by warm extrusion at a temperature of 530° to 830° C utilizing converging or tapered dies with lubricant interposed between the polycrystalline body and the converging die. With dies of rather small semiangles, alloys with improved magnetic properties with regard to (BH)_{max}, and especially Br are obtained.

6 Claims, 4 Drawing Figures



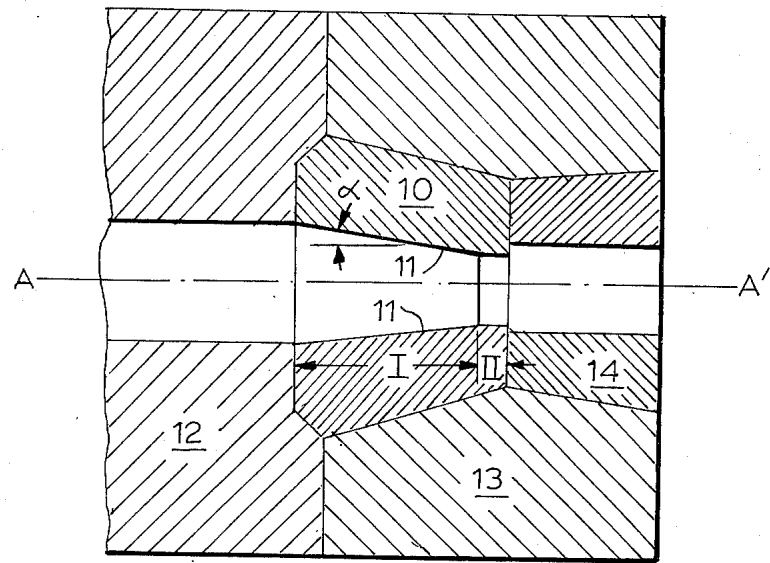


FIG. 1

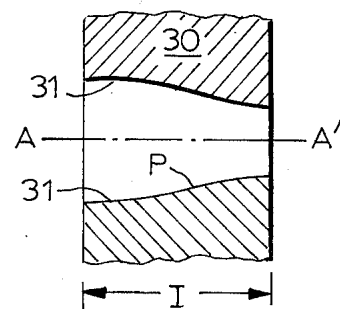
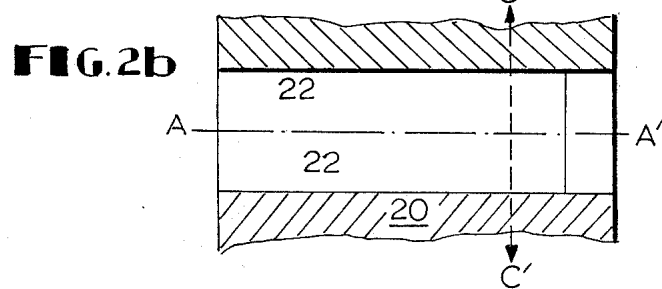
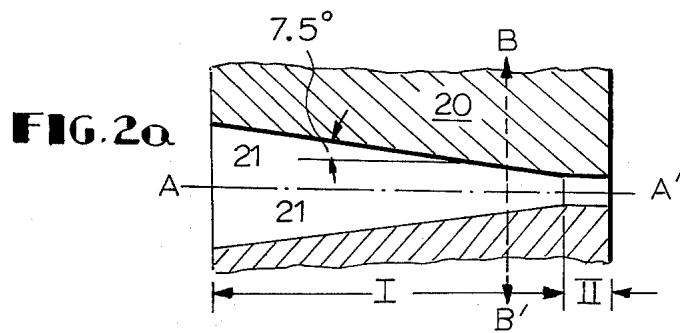


FIG. 3

METHOD OF MAKING ANISOTROPIC PERMANENT MAGNETS OF Mn-Al-C ALLOYS

BACKGROUND OF THE INVENTION

This invention relates to permanent magnets and more particularly to methods for making anisotropic permanent magnets of manganese-aluminum-carbon (Mn-Al-C) alloys.

Previously known Mn-Al alloy magnets consisting of Mn 60 ~ 75 weight % (hereinafter referred to simply as %) and the remainder Al are such that the ferromagnetic metastable τ -phase is obtained by a heat treatment, e.g. the cooling control method or the quenching-tempering method. The Mn-Al alloy magnets, however, possess magnetic properties which are low, i.e. in the order of $(BH)_{\max} = 0.5 \times 10^6$ G.Oe.

Since then, a method has been proposed for improving the magnetic properties of Mn-Al alloy magnets by applying a high degree of cold-working, i.e. swaging to the alloy to render it anisotropic. It is known that rod shaped Mn-Al alloy magnets in the ferromagnetic phase are sealed in non-magnetic stainless steel pipes, and while being held in said pipes, are subjected to swaging to a degree of 85~95%. This method is capable of producing an anisotropic permanent magnet possessing magnetic properties in the order of $(BH)_{\max} \approx 3.5 \times 10^6$ G.Oe in the direction of preferred magnetization, i.e., the axial direction of the rod. Because Mn-Al alloy magnets are intermetallic compounds having very hard and brittle mechanical properties, however, even a cold-working of less than 1% causes cracks or fractures in the alloys.

On the other hand, since the degree of anisotropization is dependent upon the degree of cold working, it is necessary to cold-work the alloy to a high degree, normally higher than 80%, in order to achieve satisfactory magnetic properties and in order to be able to conduct such cold-working step, the cold-working operation must be conducted while the alloy is sealed in a non-magnetic stainless steel pipe.

An anisotropic permanent magnet obtained by using the above method is complicated in that the Mn-Al alloy inside the pipe must be finely pulverized into powder, and, moreover, it is difficult to obtain rods of uniform cross-section. The method is therefore costly and of little practical value.

In order to overcome the above difficulties, a method has been proposed for obtaining a rod shaped anisotropic Mn-Al alloy magnet by subjecting the Mn-Al alloy magnet to hydrostatic extrusion at a temperature below 200° C, but the magnetic properties of such alloys is low, being in the order of $(BH)_{\max} = 2.5 \sim 3.6 \times 10^6$ G.Oe in the direction of preferred magnetization. This method also required a very intricate hydrostatic extrusion operation and is again a very impractical method.

On the other hand, Mn-Al-C alloy magnets are isotropic permanent magnets in bulk shape excelling in magnetic properties, stability, weathering resistance and mechanical strength, and are disclosed in U.S. Pat. No. 3,661,567. Thus, according to U.S. Pat. No. 3,661,567, these alloys may be multicomponent alloys containing impurities or additives other than Mn, Al, and C, but should contain Mn, Al, and C as indispensable components. Isotropic permanent magnets with excellent magnetic properties, i.e. better than $(BH)_{\max} = 1.0 \times 10^6$ G.Oe, while in an isotropic state (which is twice as high as the magnetic properties of

isotropic Mn-Al alloy magnets) are manufactured by the quenching-tempering method with the component ratio of Mn, Al, and C in these multi-component alloys falling within the following range:

Mn 69.5 ~ 73.0 %
Al 26.4 ~ 29.5 %
C $0.6 \sim (\frac{1}{3} \text{ Mn} - 22.2) \%$

Subsequently, methods of warm plastic deformation of Mn-Al-C alloys have been devised to improve their magnetic properties. According to co-pending U.S. Patent Application, Ser. No. 491,498, now U.S. Pat. No. 3,976,519, issue date Aug. 24, 1976, said warm plastic deformation in the temperature range of 530° C ~ 830° C provides Mn-Al-C alloy magnets of both single crystals and polycrystals with striking improvement in magnetic properties. In the compositional range wherein Mn is 68.0 ~ 73.0%, C is $(1/10 \text{ Mn} - 6.6) \sim (\frac{1}{3} \text{ Mn} - 22.2) \%$ and wherein the remainder Al, there is produced a permanent magnet with magnetic properties such that the $(BH)_{\max}$ is above 4.8×10^6 G.Oe up to about 9.2×10^6 G.Oe is its bulk state.

While the above process provides single crystal magnets having a $(BH)_{\max}$ of up to about 9.2×10^6 G.Oe, polycrystalline Mn-Al-C alloy magnets with the $(BH)_{\max}$ above 4.8×10^6 G.Oe and up to about 7.8×10^6 G.Oe may also be obtained by the warm plastic deformation, e.g. warm extrusion. Compared with the rather complicated procedure for making single-crystal Mn-Al-C alloy magnets, the method of making polycrystalline Mn-Al-C alloy magnets by warm plastic deformation is much simpler and accordingly, is of high industrial value.

Furthermore, aforementioned co-pending application, Ser. No. 491,498 indicates that a remarkable improvement in magnetic properties is realized from the above-described plastic deformation and highly increased degree of anisotropization and that this is a new phenomenon based on a mechanism peculiar to the Mn-Al-C alloy magnets. This application further indicates that C is an indispensable component element. For example, in the case of Mn-Al alloy magnets, it was confirmed that slight plasticity appeared above 580° C, but that by the working above 530° C, no improvement in magnetic properties was recognized at all, rather, the magnetic properties were greatly degraded.

As disclosed in said co-pending application, Ser. No. 491,498, the Mn-Al-C alloys are magnetically directionalized by use of warm plastic deformation in a restricted condition, in which the warm plastic deforming should be applied in a specific direction in the temperature range of 530° ~ 830° C in order to cause the sliding of the plane of atoms in a specific direction. The magnetic directionalization can be made by said sliding of plane of atoms from any phases containing carbon as an indispensable component element, i.e., the close-packed hexagonal ϵ -phase, orthorhombic ϵ' -phase, face-centered tetragonal τ -phase, or a plurality of said phases. The ϵ' is a newly found intermediate phase in the $\epsilon \rightleftharpoons \tau$ transformation, which is represented by B 19-type structure [lattice constants, $a = 4.371$ Å, $b = 2.758$ Å and $c = 4.582$ Å].

The experimental studies on the Mn-Al-C single crystals have made it clear that only the restricted directional deformation or to be more precise, the direction of the compression to be restricted within the specific directional range, crystallographically causes the atom sliding so that the formation of the objective directional

ferromagnetic τ phase is available. Said directional deformation should be one that causes the sliding of the plane of atoms in the (0001) $_{\epsilon}$ phase to the $[1100]_{\epsilon}$ direction of the ϵ phase, in the same corresponding (100) $_{\epsilon'}$ plane to the $[001]_{\epsilon'}$ direction of the ϵ' phase, and the same corresponding (111) $_{\tau}$ plane to the $[1\bar{1}2]_{\tau}$ direction of the τ -phase. With respect to the compression direction relative to the τ -phase crystal orientation after deformation, compression in the direction nearly perpendicular to the $[001]_{\tau}$ axis of the obtained τ -phase single crystal after deformation, which axis is the objective direction of easy magnetization, facilitates sliding of the plane of atoms in every phase. When compressed under such conditions, deformation anisotropy was notable, i.e., remarkable shrinkage in the direction of the compression was observed, and notable elongation was recognized in the only one direction perpendicular to the compression direction. The direction where notable elongation was recognized is nearly the same as the direction of easy magnetization of the obtained τ -phase single crystal. Accordingly, a magnetically anisotropic single crystalline magnet is the uni-directional τ -phase was obtained from any of the phases mentioned above.

Thus, with regard to the single crystalline Mn-Al-C alloys, the necessity of the specific directional deformation was recognized for making magnetically anisotropic permanent magnets.

Regarding the polycrystalline Mn-Al-C alloys, said co-pending application, Ser. No. 491,498 also has indicated that as the alloys were upset in said temperature range, anisotropic permanent magnets with the direction of preferred magnetization being in the direction of diameter which was perpendicular to the direction of compression, were obtained. And, when the alloys were extruded, it was made clear that the direction of preferred magnetization was in the direction of extrusion.

However, behavior of the Mn-Al-C polycrystalline alloys under deformation in the warm extrusion process in very complicated because of effects such as diversification in orientation of minute crystals, grain boundaries and friction, etc. Because of the above difficulties, the influence of profiles of the extrusion dies bounding the alloys in order to cause plastic deformation there-through is unclear. In particular, the contribution of the die angle to the formation of magnetically directionalized τ -phase polycrystalline alloys, has not been clarified.

SUMMARY OF THE INVENTION

Accordingly it is a principal object of the present invention to provide a method of making an anisotropic permanent magnet of Mn-Al-C polycrystalline alloy having excellent magnetic properties in the extrusion direction.

It is a further object to provide a method of making an anisotropic permanent magnet of Mn-Al-C polycrystalline alloy having a magnetic property such as the (BH) max exceeds 6.0×10^6 G.Oe in its direction of preferred magnetization, i.e., the extrusion direction.

It is another object to provide a method of making a strong anisotropic permanent magnet of Mn-Al-C polycrystalline alloy, and eliminating formation of both internal and external ruptures such as central burst formation and dead zone formation during extrusion of the alloy.

It is further object to provide a method of making an anisotropic permanent magnet of Mn-Al-C polycrystalline alloy whose cross-section, which is perpendicular

to the extrusion direction, is not only circular but can also be rectangular, etc.

These objects are achieved by subjecting a polycrystalline body of an alloy comprising Mn-Al-C system to warm extrusion by pushing said polycrystalline body through a converging or a tapered die at a temperature range of 530° to 830° C with lubricant interposed between said polycrystalline body and the converging die.

Hereinabove, an alloy comprising the Mn-Al-C system to be subjected to the warm extrusion means an alloy containing, as a main part, the Mn-Al-C alloy comprising of one or plurality of the phases of ϵ , ϵ' , and τ . A magnetically well directionalized permanent magnet is produced from any of these phases by the method of this invention. The phases of ϵ , ϵ' , and τ should contain C as an indispensable component element, and the presence of a compound of carbon other than Al_4C_3 , such as Mn_3AlC , is allowable. Also the alloy mentioned above includes an alloy containing impurities or additives other than Mn, Al and C.

Because ϵ' -phase and τ -phase are induced from ϵ -phase, the most extensive compositional range, wherein the effect of this invention exists, is the compositional range wherein ϵ -phase exists. However, a preferred compositional range of the three indispensable components, i.e., Mn, Al and C, is as follows:

Mn 68.0~73.0%

C (1/10 Mn - 6.6 ~ (1/3 Mn - 22.2)%)

Al remainder

Hereabove, the mathematical formula of (1/10 - 6.6) % represents the solubility limit of carbon in the ferromagnetic phase within the compositional range of 68.0~73.0 % Mn. And the mathematical formula of (1/3 Mn - 22.2) % is the boundary line of carbon concentration, in excess of which a compound of Al_4C_3 is formed at temperatures above the melting points of Mn-Al-C alloys. Al_4C_3 , hydrolyzed by moisture in the air, etc., causes the alloys to crack, leading finally to the decay of alloys with the further proceeding of hydrolysis.

Other features and advantages of the invention will be apparent from the following description taken in connection with the accompanying drawings.

BRIEF DESCRIPTION OF THE DRAWINGS

FIG. 1 presents a schematic vertical section of a representative converging die with another die assembly.

FIG. 2 displays surroundings of the converging die used in Example -2 as vertical sections. Each vertical section of FIG. 2(a) and FIG. 2(b) is perpendicular to the other.

FIG. 3 depicts surroundings of the converging die having a curved internal die profile used in Example 3, as a vertical section.

DESCRIPTION OF THE PREFERRED EMBODIMENTS

The present inventors have investigated into the influence of the die profile on the magnetic properties of the Mn-Al-C alloy magnet after warm extrusion.

As a result, it has been determined that a variation of the die profile greatly affects the magnetic characteristics of the product. Thus, the die angle was found to have a great influence on the formation of the magnetically directionalized τ -phase polycrystals. This had not been clear from the disclosure of the co-pending application, Ser. No. 491,498, and said influence of the die angle was recognized only by the experimental results of the present invention for the first time.

These experimental results indicated that the Mn-Al-C system alloy exhibited peculiar behavior in the extrusion process, which behavior differs from ordinary metal extrusion. These results promote understanding of deformation anisotropy of single crystals and polycrystalline bodies.

A profile of one of the converging or tapered dies is shown in FIG. 1 as a schematic vertical section of the die assembly. A converging die 10 has an inclined internal die surface 11 converging with semiangle α to the extrusion direction A-A' in a converging portion I, and also has a bearing portion II. The die 10 is set with a container 12, a die holder 13 and a die backer 14. Thus a converging die has a converging portion in that the cross-sectional area of the internal opening of the die decreases along the extrusion direction. The reduction of area is defined by the following expression;

$$\text{reduction of area (\%)} = \left(1 - \frac{\text{cross-sectional area of the extruded material}}{\text{cross-sectional area of the billet}} \right) \times 100$$

The results achieved in this invention, which results will be disclosed in the following specific embodiments, indicate that an improved method of making an anisotropic Mn-Al-C alloy magnet by means of warm extrusion through a converging die has been developed. This invention does not place a restriction on the die assembly to be employed other than on the converging portion.

A converging surface of a die means a surface of rigid or immovable material which substantially contributes to deformation through the medium of a lubricating film. Accordingly, a die for this invention, for example, may be constructed so that the converging die is the immovable main part, and so that a lubricating film can be applied of itself thereto by way of the surface of said main part softening during warm extrusion.

When the semiangle α is small enough, the billet of polycrystalline Mn-Al-C system alloy undergoes rather uniform compressive deformation in the direction nearly perpendicular to the extrusion direction in the converging portion. Accordingly, said compression deformation results in the effective directional working, described before, which in turn results in an anisotropic Mn-Al-C system alloy magnet whose direction of preferred magnetization is in the extrusion direction. Judging from this point of view, it can be supposed that the smaller the semiangle α is, the more the die contributes to the magnetic properties of the product in the extrusion direction. This is the very point of this invention, which is confirmed by the experiments disclosed below.

Meanwhile, there exist some restrictions in the actual extrusion process. For example, it is restricted in the length of the converging portion, due to the various reasons described hereinafter. Because of certain degree of friction between a billet and a die exists, even though the contact surface is well lubricated, if the converging portion is too long, an influence of the friction on the required extrusion force becomes so large that it gives rise to substantial difficulty in the extrusion operation. Moreover, because the ferromagnetic τ -phase obtained after the extrusion is metastable, too long a stay in the extrusion process, tends to cause a transformation into the non-magnetic stable phases, i.e. AlMn(r) phase and

β -Mn phase, which phases are supposed to be unfavorable.

In view of the above-described difficulties, a die with too small a semiangle α , resulting in too long a converging portion, is to be avoided. In Example 1 of this invention, a converging die with a semiangle α being equal to or greater than 2.5° in the sphere of small die angle, can be employed in a practical extrusion, and makes a good contribution to the magnetic characteristics of the extruded product.

Hereinabove, if the internal die surface is not axis-symmetric, which means that different semiangles exist around the axis of extrusion direction, the semiangle α to be discussed is that of the maximum semiangle of the converging die, wherein the converging surface of the die with said semiangle α substantially affects the deformation, and that substantially provides the length of the converging portion. Other die surfaces of the same die with smaller semiangles than the semiangle α defined above the permissible. For example, the existence of lateral die surface other than the inclined die-surfaces, in the same converging portion, like that of Example 2, which are a pair of plane surfaces being parallel to the extrusion direction whose semiangle can be expressed as 0° , are permissible. Other substantial variations are also possible.

Meanwhile, there are many variations of the die profile such that the semiangle varies along the extrusion direction. Some of the variations are, e.g. convex, cosine and sigmoidal, being known generically as a curved internal die profile. If the semiangle changes discontinuously, doubly shaped or plurally shaped die profiles can be employed. It is clear that these variations of the die profile stated hereinabove could be applied to this invention. Although it is difficult to define the representative semiangle α of the curved die, at least the mean value of the semiangle between the inlet and the exit of the converging portion should fall in the small semiangle range to be mentioned in the following example, in order to obtain an anisotropic permanent magnet of Mn-Al-C polycrystalline alloy with highly improved magnetic properties. It is preferred that the maximum semiangle along the extrusion direction also falls in the small semiangle range, if the partial internal surface of the die with larger semiangle, i.e., the maximum or nearly the maximum semiangle, provides a comparatively large reduction of area in relation to the total reduction of area of the curved die.

In order to realize the extrusion where the semiangle α of the converging die is small, the friction between the billet and the die should be reduced by lubrication. As a result of experiments, many lubricants including solid lubricants, dispersions and glass state lubricants were found to be capable of being used for the extrusion of this invention. The general trend for the relation between the semiangle α and the magnetic characteristics was almost the same qualitatively for various lubricants.

Furthermore, a better result is expected when said polycrystalline alloy undergoes compressive deformation in many directions centripetally around the extrusion direction, in order to provide said preferable directional deformation on every minute crystal diversified in orientation. Accordingly, a converging die with an axis-symmetric internal die surface whose semiangle α is small, is considered to be the best die for making an anisotropic permanent magnet of Mn-Al-C system poly-

crystalline alloy. This will be clear from the following examples.

EXAMPLE 1

From a casting having a composition of 69.48% Mn, 29.98% Al and 0.54% C, as chemically analyzed, cylindrical billets of 20mm $\phi \times 35$ mm were cut. After holding them at a temperature of 1150° C for 2 hours, the billets were rapidly cooled at a rate of about 500° C/min., and were further subjected to tempering at 550° C for 30 minutes. As examined by X-ray diffraction, τ -phase was detected. Said billets of Mn-Al-C polycrystalline alloy were subjected to an axis-symmetric extrusion, whose reduction of area was 64 %, at a temperature of 700° C. The experiment was performed, respectively, by extruding through a conical die of different die angles. A dummy billet of various lengths for each case was employed in order to push the test billet through the converging die. The billet was lubricated with a graphite-copper-glass system composite lubricant.

The result of the experiment is shown in Table 1, wherein mean stationary extrusion pressure and magnetic properties are presented in relation to the semiangle α of the die.

Table 1

Semiangle degree	means stationary extrusion pressure Kg/mm ²	magnetic properties		
		Br G.	bHc Oe.	(BH) _{max} x 10 ⁶ G.Oe.
2.5	67	6000	1750	5.1
5	54	6400	2200	6.2
7.5	46	6500	2600	7.1
10	42	6450	2700	7.2
15	40	6300	2700	6.9
20	39	5950	2550	6.1
25	42	5050	2350	4.5
30	44	4100	2300	3.6
45	61	3900	2250	3.0
60	89	3850	2150	2.8

As a result, anisotropic permanent magnets of Mn-Al-C polycrystalline alloy, whose direction of preferred magnetization was in the axis of each product, which was the extrusion direction, were obtained with each converging die of different die angles shown in Table 1. It is worthy of special mention that the magnetic properties, especially maximum energy product ((BH)_{max}) and residual magnetic flux density (Br), which closely relates to the alignment of [001] τ axis of the ferromagnetic τ -phase crystals, were improved as the semiangle α of the die decreased. This trend was accelerated with the semiangle α in the range from 30° to 20°. Meanwhile, a small amount of decline in magnetic properties appeared with the semi-angle α lowered beyond 7.5°, which was the semiangle α providing nearly the maximum value in both (BH)_{max} and Br in this example. This can perhaps be explained by some unfavorable effects an application to the practice such as friction and increase of extrusion pressure. But this unfavorable influence is rather smaller than the desirable contribution of the small die angle. For example, comparing two representative cases, i.e. where the semiangle α is 2.5° and 45°, in spite of exhibiting nearly the same extrusion pressure, the die with the semiangle α of 2.5° provided much superior magnetic properties than the die with the semiangle α of 45° did, as shown in Table 1. Accordingly, regarding this example, anisotropic permanent magnets of Mn-Al-C polycrystalline alloy with preferred magnetic characteristics were provided when the semiangle α was smaller than or equal to 30°. Moreover,

the optimum semiangle α , which provided a (BH)_{max} of greater than 6.0×10^6 G.Oe, was in the range of from 5° to 20°.

With respect to physical faults of the product, no dead zone formation occurred with every converging die shown in Table 1; whereas a flat die, whose semiangle can be expressed at 90°, caused dead zone formation. The die with semiangle α of 60° caused slight central bursting defects in the extruded product, while another converging die shown in Table 1 provided no internal opening defect. As the reduction of area being increased to 80%, however, no central bursting defect was found even for the semiangle α of 60°.

Furthermore, the result of the experiment with the dies of different reduction of area qualitatively showed the same tendency as that of Table 1 with respect to the relation between the magnetic properties and the semiangle α of the die. In other words, as the reduction of area varied from 50% to 95%, Br and (BH)_{max} were increased in the range of small semiangle, and the optimum range of the semiangle α was from 5° to 20°.

Accordingly, it is clear that the magnetic characteristics depend greatly upon the die angle in a method of making an anisotropic permanent magnet of Mn-Al-C polycrystalline alloy by warm extrusion. Consequently, the die angle of the extrusion die for making an anisotropic permanent magnet of Mn-Al-C polycrystalline alloy is determined mainly by its contribution to the magnetic characteristics of the extruded product, in contrast with ordinary metal extrusion in which the die angle is determined mainly by technical problems such as minimization of extrusion pressure.

EXAMPLE 2

From a casting having a composition of 71.73% Mn, 27.39% Al and 0.88% C, as chemically analyzed, a 20 mm cubic test billet was cut out. Then after subjecting said test billet to heat treatment at a temperature of 1150° C for 2 hours, it was gradually cooled to 830° C at a cooling rate of 10° ~ 15° C/min, and was then held at 830° C for 15 minutes. It was quenched from 830° C at a cooling rate of about 700° C/min. After the above heat-treatment, the test billet was found to consist of ϵ -phase crystals and lamellae of a compound Mn₃AlC.

FIG. 2 shows a vertical cross-section of the area surrounding the internal opening of the converging die used in the example. FIG. 2 a exhibits a pair of inclined internal die surfaces 21 respectively converging at 7.5° to the meridian plane which includes the extrusion direction (A-A') in a converging portion I. FIG. 2 b exhibits another vertical section of the same die along the meridian plane of FIG. 2 a. Thus the internal opening of the die in the converging portion I is made up of two different kinds of lateral plane surfaces, one of which is a pair of plane-symmetric inclined plane surfaces 21 converging with a semiangle of 7.5° to the extrusion direction (A-A'), and the other is a pair of plane surfaces 22 being parallel to the extrusion direction A-A'.

Said test billet was extruded with a dummy billet through the plane-symmetric converging die mentioned hereinabove, whose reduction of area was 75%. Extrusion temperature was at 750° C and punch speed was 5 mm.sec.⁻¹. The extruded product was sound and without any ruptures. Thereafter, it was tempered at 550° C for 30 min. Then, magnetic properties were measured in the extrusion direction. The result was as follows:

Br = 5800 G
BHc = 2350 Oe
(BH)_{max} = 5.8×10^6 G.Oe

Accordingly, an anisotropic permanent magnet whose cross-section was a 20mm \times 5mm rectangle was produced. Hereinabove, compressive deformation in the direction C-C' was absent, providing every minute crystal with reduced probability of undergoing said preferred directional working. Unexpected yet fairly good magnetic characteristics were provided. These characteristics were a little worse than that realized by 5
10
15
20
25
30
35
40
45
50
55
60
65
70
75
80
85
90
95
100
105
110
115
120
125
130
135
140
145
150
155
160
165
170
175
180
185
190
195
200
205
210
215
220
225
230
235
240
245
250
255
260
265
270
275
280
285
290
295
300
305
310
315
320
325
330
335
340
345
350
355
360
365
370
375
380
385
390
395
400
405
410
415
420
425
430
435
440
445
450
455
460
465
470
475
480
485
490
495
500
505
510
515
520
525
530
535
540
545
550
555
560
565
570
575
580
585
590
595
600
605
610
615
620
625
630
635
640
645
650
655
660
665
670
675
680
685
690
695
700
705
710
715
720
725
730
735
740
745
750
755
760
765
770
775
780
785
790
795
800
805
810
815
820
825
830
835
840
845
850
855
860
865
870
875
880
885
890
895
900
905
910
915
920
925
930
935
940
945
950
955
960
965
970
975
980
985
990
995
1000
1005
1010
1015
1020
1025
1030
1035
1040
1045
1050
1055
1060
1065
1070
1075
1080
1085
1090
1095
1100
1105
1110
1115
1120
1125
1130
1135
1140
1145
1150
1155
1160
1165
1170
1175
1180
1185
1190
1195
1200
1205
1210
1215
1220
1225
1230
1235
1240
1245
1250
1255
1260
1265
1270
1275
1280
1285
1290
1295
1300
1305
1310
1315
1320
1325
1330
1335
1340
1345
1350
1355
1360
1365
1370
1375
1380
1385
1390
1395
1400
1405
1410
1415
1420
1425
1430
1435
1440
1445
1450
1455
1460
1465
1470
1475
1480
1485
1490
1495
1500
1505
1510
1515
1520
1525
1530
1535
1540
1545
1550
1555
1560
1565
1570
1575
1580
1585
1590
1595
1600
1605
1610
1615
1620
1625
1630
1635
1640
1645
1650
1655
1660
1665
1670
1675
1680
1685
1690
1695
1700
1705
1710
1715
1720
1725
1730
1735
1740
1745
1750
1755
1760
1765
1770
1775
1780
1785
1790
1795
1800
1805
1810
1815
1820
1825
1830
1835
1840
1845
1850
1855
1860
1865
1870
1875
1880
1885
1890
1895
1900
1905
1910
1915
1920
1925
1930
1935
1940
1945
1950
1955
1960
1965
1970
1975
1980
1985
1990
1995
2000
2005
2010
2015
2020
2025
2030
2035
2040
2045
2050
2055
2060
2065
2070
2075
2080
2085
2090
2095
2100
2105
2110
2115
2120
2125
2130
2135
2140
2145
2150
2155
2160
2165
2170
2175
2180
2185
2190
2195
2200
2205
2210
2215
2220
2225
2230
2235
2240
2245
2250
2255
2260
2265
2270
2275
2280
2285
2290
2295
2300
2305
2310
2315
2320
2325
2330
2335
2340
2345
2350
2355
2360
2365
2370
2375
2380
2385
2390
2395
2400
2405
2410
2415
2420
2425
2430
2435
2440
2445
2450
2455
2460
2465
2470
2475
2480
2485
2490
2495
2500
2505
2510
2515
2520
2525
2530
2535
2540
2545
2550
2555
2560
2565
2570
2575
2580
2585
2590
2595
2600
2605
2610
2615
2620
2625
2630
2635
2640
2645
2650
2655
2660
2665
2670
2675
2680
2685
2690
2695
2700
2705
2710
2715
2720
2725
2730
2735
2740
2745
2750
2755
2760
2765
2770
2775
2780
2785
2790
2795
2800
2805
2810
2815
2820
2825
2830
2835
2840
2845
2850
2855
2860
2865
2870
2875
2880
2885
2890
2895
2900
2905
2910
2915
2920
2925
2930
2935
2940
2945
2950
2955
2960
2965
2970
2975
2980
2985
2990
2995
3000
3005
3010
3015
3020
3025
3030
3035
3040
3045
3050
3055
3060
3065
3070
3075
3080
3085
3090
3095
3100
3105
3110
3115
3120
3125
3130
3135
3140
3145
3150
3155
3160
3165
3170
3175
3180
3185
3190
3195
3200
3205
3210
3215
3220
3225
3230
3235
3240
3245
3250
3255
3260
3265
3270
3275
3280
3285
3290
3295
3300
3305
3310
3315
3320
3325
3330
3335
3340
3345
3350
3355
3360
3365
3370
3375
3380
3385
3390
3395
3400
3405
3410
3415
3420
3425
3430
3435
3440
3445
3450
3455
3460
3465
3470
3475
3480
3485
3490
3495
3500
3505
3510
3515
3520
3525
3530
3535
3540
3545
3550
3555
3560
3565
3570
3575
3580
3585
3590
3595
3600
3605
3610
3615
3620
3625
3630
3635
3640
3645
3650
3655
3660
3665
3670
3675
3680
3685
3690
3695
3700
3705
3710
3715
3720
3725
3730
3735
3740
3745
3750
3755
3760
3765
3770
3775
3780
3785
3790
3795
3800
3805
3810
3815
3820
3825
3830
3835
3840
3845
3850
3855
3860
3865
3870
3875
3880
3885
3890
3895
3900
3905
3910
3915
3920
3925
3930
3935
3940
3945
3950
3955
3960
3965
3970
3975
3980
3985
3990
3995
4000
4005
4010
4015
4020
4025
4030
4035
4040
4045
4050
4055
4060
4065
4070
4075
4080
4085
4090
4095
4100
4105
4110
4115
4120
4125
4130
4135
4140
4145
4150
4155
4160
4165
4170
4175
4180
4185
4190
4195
4200
4205
4210
4215
4220
4225
4230
4235
4240
4245
4250
4255
4260
4265
4270
4275
4280
4285
4290
4295
4300
4305
4310
4315
4320
4325
4330
4335
4340
4345
4350
4355
4360
4365
4370
4375
4380
4385
4390
4395
4400
4405
4410
4415
4420
4425
4430
4435
4440
4445
4450
4455
4460
4465
4470
4475
4480
4485
4490
4495
4500
4505
4510
4515
4520
4525
4530
4535
4540
4545
4550
4555
4560
4565
4570
4575
4580
4585
4590
4595
4600
4605
4610
4615
4620
4625
4630
4635
4640
4645
4650
4655
4660
4665
4670
4675
4680
4685
4690
4695
4700
4705
4710
4715
4720
4725
4730
4735
4740
4745
4750
4755
4760
4765
4770
4775
4780
4785
4790
4795
4800
4805
4810
4815
4820
4825
4830
4835
4840
4845
4850
4855
4860
4865
4870
4875
4880
4885
4890
4895
4900
4905
4910
4915
4920
4925
4930
4935
4940
4945
4950
4955
4960
4965
4970
4975
4980
4985
4990
4995
5000
5005
5010
5015
5020
5025
5030
5035
5040
5045
5050
5055
5060
5065
5070
5075
5080
5085
5090
5095
5100
5105
5110
5115
5120
5125
5130
5135
5140
5145
5150
5155
5160
5165
5170
5175
5180
5185
5190
5195
5200
5205
5210
5215
5220
5225
5230
5235
5240
5245
5250
5255
5260
5265
5270
5275
5280
5285
5290
5295
5300
5305
5310
5315
5320
5325
5330
5335
5340
5345
5350
5355
5360
5365
5370
5375
5380
5385
5390
5395
5400
5405
5410
5415
5420
5425
5430
5435
5440
5445
5450
5455
5460
5465
5470
5475
5480
5485
5490
5495
5500
5505
5510
5515
5520
5525
5530
5535
5540
5545
5550
5555
5560
5565
5570
5575
5580
5585
5590
5595
5600
5605
5610
5615
5620
5625
5630
5635
5640
5645
5650
5655
5660
5665
5670
5675
5680
5685
5690
5695
5700
5705
5710
5715
5720
5725
5730
5735
5740
5745
5750
5755
5760
5765
5770
5775
5780
5785
5790
5795
5800
5805
5810
5815
5820
5825
5830
5835
5840
5845
5850
5855
5860
5865
5870
5875
5880
5885
5890
5895
5900
5905
5910
5915
5920
5925
5930
5935
5940
5945
5950
5955
5960
5965
5970
5975
5980
5985
5990
5995
6000
6005
6010
6015
6020
6025
6030
6035
6040
6045
6050
6055
6060
6065
6070
6075
6080
6085
6090
6095
6100
6105
6110
6115
6120
6125
6130
6135
6140
6145
6150
6155
6160
6165
6170
6175
6180
6185
6190
6195
6200
6205
6210
6215
6220
6225
6230
6235
6240
6245
6250
6255
6260
6265
6270
6275
6280
6285
6290
6295
6300
6305
6310
6315
6320
6325
6330
6335
6340
6345
6350
6355
6360
6365
6370
6375
6380
6385
6390
6395
6400
6405
6410
6415
6420
6425
6430
6435
6440
6445
6450
6455
6460
6465
6470
6475
6480
6485
6490
6495
6500
6505
6510
6515
6520
6525
6530
6535
6540
6545
6550
6555
6560
6565
6570
6575
6580
6585
6590
6595
6600
6605
6610
6615
6620
6625
6630
6635
6640
6645
6650
6655
6660
6665
6670
6675
6680
6685
6690
6695
6700
6705
6710
6715
6720
6725
6730
6735
6740
6745
6750
6755
6760
6765
6770
6775
6780
6785
6790
6795
6800
6805
6810
6815
6820
6825
6830
6835
6840
6845
6850
6855
6860
6865
6870
6875
6880
6885
6890
6895
6900
6905
6910
6915
6920
6925
6930
6935
6940
6945
6950
6955
6960
6965
6970
6975
6980
6985
6990
6995
7000
7005
7010
7015
7020
7025
7030
7035
7040
7045
7050
7055
7060
7065
7070
7075
7080
7085
7090
7095
7100
7105
7110
7115
7120
7125
7130
7135
7140
7145
7150
7155
7160
7165
7170
7175
7180
7185
7190
7195
7200
7205
7210
7215
7220
7225
7230
7235
7240
7245
7250
7255
7260
7265
7270
7275
7280
7285
7290
7295
7300
7305
7310
7315
7320
7325
7330
7335
7340
7345
7350
7355
7360
7365
7370
7375
7380
7385
7390
7395
7400
7405
7410
7415
7420
7425
7430
7435
7440
7445
7450
7455
7460
7465
7470
7475
7480
7485
7490
7495
7500
7505
7510
7515
7520
7525
7530
7535
7540
7545
7550
7555
7560
7565
7570
7575
7580
7585
7590
7595
7600
7605
7610
7615
7620
7625
7630
7635
7640
7645
7650
7655
7660
7665
7670
7675
7680
7685
7690
7695
7700
7705
7710
7715
7720
7725
7730
7735
7740
7745
7750
7755
7760
7765
7770
7775
7780
7785
7790
7795
7800
7805
7810
7815
7820
7825
7830
7835
7840
7845
7850
7855
7860
7865
7870
7875
7880
7885
7890
7895
7900
7905
7910
7915
7920
7925
7930
7935
7940
7945
7950
7955
7960
7965
7970
7975
7980
7985
7990
7995
8000
8005
8010
8015
8020
8025
8030
8035
8040
8045
8050
8055
8060
8065
8070
8075
8080
8085
8090
8095
8100
8105
8110
8115
8120
8125
8130
8135
8140
8145
8150
8155
8160
8165
8170
8175
8180
8185
8190
8195
8200
8205
8210
8215
8220
8225
8230
8235
8240
8245
8250
8255
8260
8265
8270
8275
8280
8285
8290
8295
8300
8305
8310
8315
8320
8325
8330
8335
8340
8345
8350
8355
8360
8365
8370
8375
8380
8385
8390
8395
8400
8405
8410
8415
8420
8425
8430
8435
8440
8445
8450
8455
8460
8465
8470
8475
8480
8485
8490
8495
8500
8505
8510
8515
8520
8525
8530
8535
8540
8545
8550
8555
8560
8565
8570
8575
8580
8585
8590
8595
8600
8605
8610
8615
8620
8625
8630
8635
8640
8645
8650
8655
8660
8665
8670
8675
8680
8685
8690
8695
8700
8705
8710
8715
8720
8725
8730
8735
8740
8745
8750
8755
8760
8765
8770
8775
8780
8785
8790
8795
8800
8805
8810
8815
8820
8825
8830
8835
8840
8845
8850
8855
8860
8865
8870
8875
8880
8885
8890
8895
8900
8905
8910
8915
8920
8925
8930
8935
8940
8945
8950
8955
8960
8965
8970
8975
8980
8985
8990
8995
9000
9005
9010
9015
9020
9025
9030
9035
9040
9045
9050
9055
9060
9065
9070
9075
9080
9085
9090
9095
9100
9105
9110
9115
9120
9125
9130
9135
9140
9145
9150
9155
9160
9165
9170
9175
9180
9185
9190
9195
9200
9205
9210
9215
9220
9225
9230
9235
9240
9245
9250
9255
9260
9265
9270
9275
9280
9285
9290
9295
9300
9305
9310
9315
9320
9325
9330
9335
9340
9345
9350
9355
9360
9365
9370
9375
9380
9385
9390
9395
9400
9405
9410
9415
9420
9425
9430
9435
9440
9445
9450
9455
9460
9465
9470
9475
9480
9485
9490
9495
9500
9505
9510
9515
9520
9525
9530
9535
9540
9545
9550
9555
9560
9565
9570
9575
9580
9585
9590
9595
9600
9605
9610
9615
9620
9625
9630
9635
9640
9645
9650
9655
9660
9665
9670
9675
9680
9685
9690
9695
9700
9705
9710
9715
9720
9725
9730
9735
9740
9745
9750
9755
9760
9765
9770
9775
9780
9785
9790
9795
9800
9805
9810
9815
9820
9825
9830
9835
9840
9845
9850
9855
9860
9865
9870
9875
9880
9885
9890
9895
9900
9905
9910
9915
9920
9925
9930
9935
9940
9945
9950
9955
9960
9965
9970
9975
9980
9985
9990
9995
10000
10005
10010
10015
10020
10025
10030
10035
10040
10045
10050
10055
10060
10065
10070
10075
10080
10085
10090
10095
10100
10105
10110
10115
10120
10125
10130
10135
10140
10145
10150
10155
10160
10165
10170
10175
10180
10185
10190
10195
10200
10205
10210
10215
10220
10225
10230
10235
10240